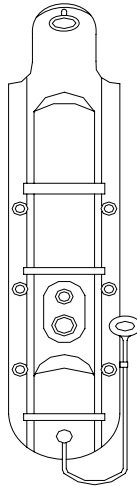




SHOWER PANEL

Instructions for operation



ALANBRO SANITARY WARE FACTORY

Tel: 020-86884490

Fax: 020-86884492

Postcode: 510800

Index

□	Technical parameter	1
□	Installation instruction	1
□	Installation of G551 & G552 light	2
□	Usage of water ware	2
□	Maintenance	3
□	Trouble obviation	4
□	Installation illustration	5

1. PARAMETER

Model	Specified voltage /V	Frequency /Hz	Power /w	Control method	The maximum size /mm
G550	N	N	N	N	350x1250x 230
G551	220	50	30/12v	air	350x1600x 230
G552	220	50	30/12v	air	430x1680x 440
G553	N	N	N	N	340x1380x 230
G554	N	N	N	N	340x1380x 200
G555	N	N	N	N	350x1400x 230
G556A	N	N	N	N	260x2000x 250
G556B	N	N	N	N	260x2000x 250
G557A	N	N	N	N	260x1300x 250
G557B	N	N	N	N	260x1300x 250
G558	N	N	N	N	300x1200x 150
G559	N	N	N	N	350x1400x 150
G560	N	N	N	N	350x1400 x 170
G561	N	N	N	N	385x1300 x 200

2. INSTALLATION INSTRUCTION

1. Position of hot and cool water supply:

The position of hot and cool water supply pipe should be reserved according to the installation diagram.

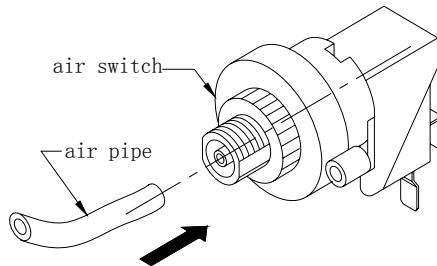
2. Fixing of hanger-iron:

Drill holes in the wall by 6mm driller according to the diagram, and put plastic bar inside. Fix the hanger-iron by 4 pieces screws.

3. Connecting of hot and cool water:
Connecting of hot and cool water supply to the shower panel according to the diagram.
4. Installation:
Fix the shower panel body on upper and lower hanger-iron (marks the space between shower panel and wall can be adjusted.)

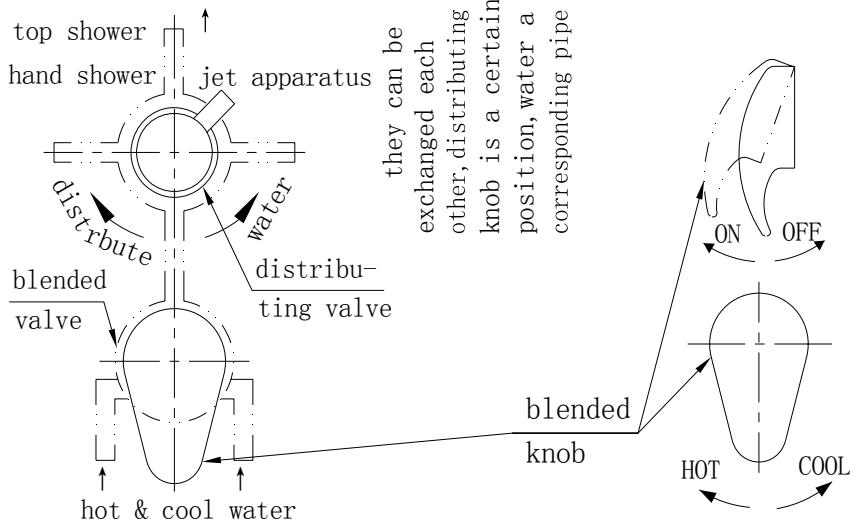
□ **Installation of G551 & G552 light**

1. Fix the light with the acrylic part.
2. Connect the water pipe for head shower with joint.
3. Connect the air pipe to air switch.

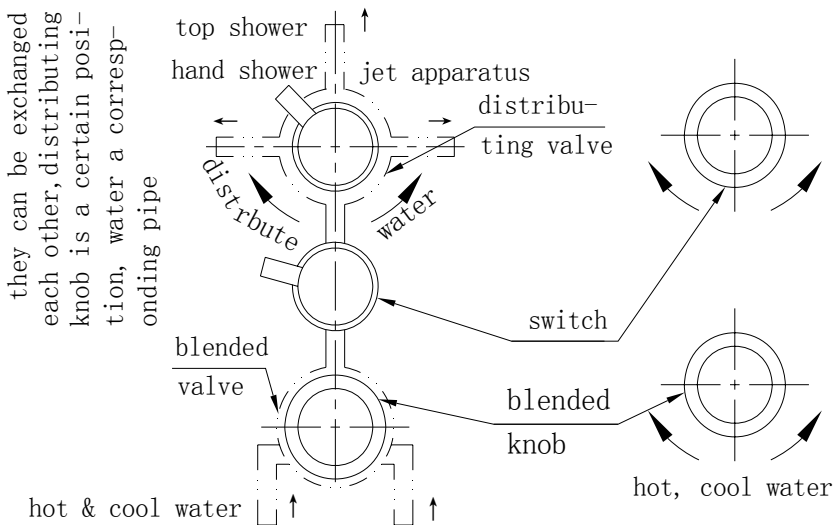


3. USAGE OF WATER WARE

1. USAGE OF SWITCH

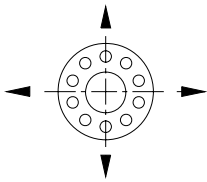


Universal valve

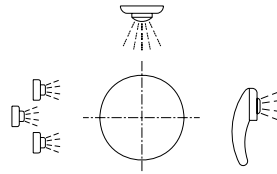


Thermostatic valve

2. USAGE OF NOZZLE & DISTRIBUTING VALVE



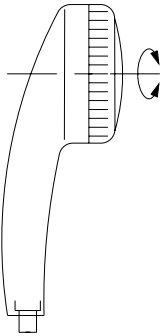
deflexion random



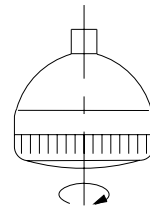
distributing valve

The direction of nozzle can be adjusted freely.

3 USAGE OF HAND SHOWER & TOP SHOWER



THE COVER OF HAND
SHOWER AND TOP SHOWER
CAN BE ADJUSTED TO
GET SIX DIFFERENT
SPRAY



4. MAINTENANCE

1. The shower can be cleaned with liquid detergent and soft cloth. But the following material is prohibited:

- a) Acetone
- b) Ammonia
- c) Other organic impregnant.
- d) The surface can be polished using polishing wax

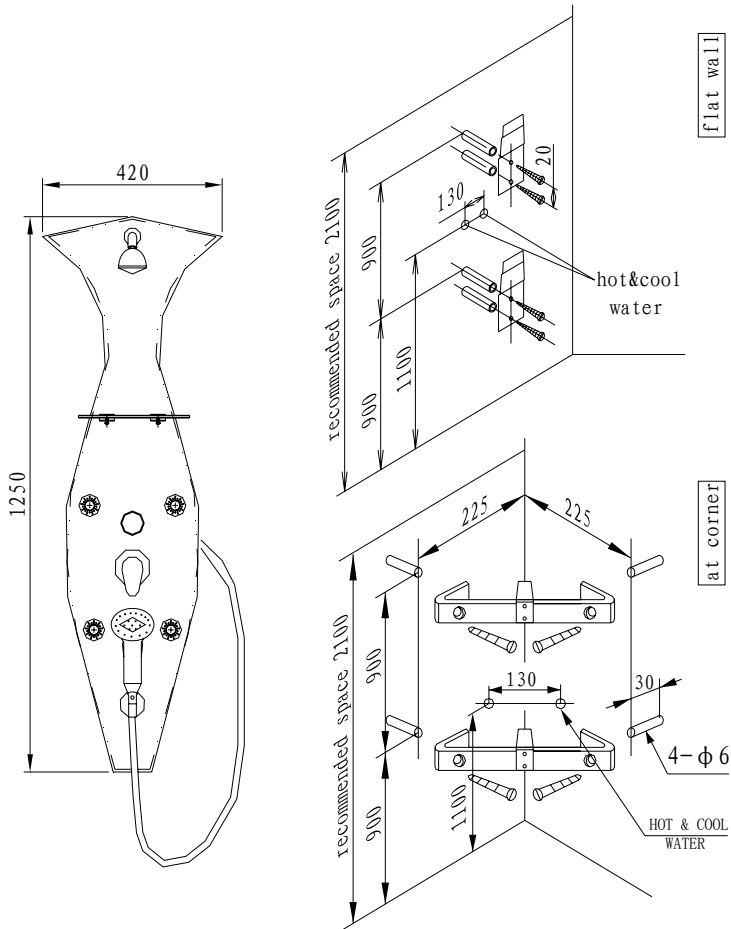
2. If the surface is scratched or burnt, it can be polished by 1200# abrasive paper. And polish again by 2000# abrasive paper. The surface should be polished with polishing wax and soft cloth.

5. TROUBLE OBVIATION

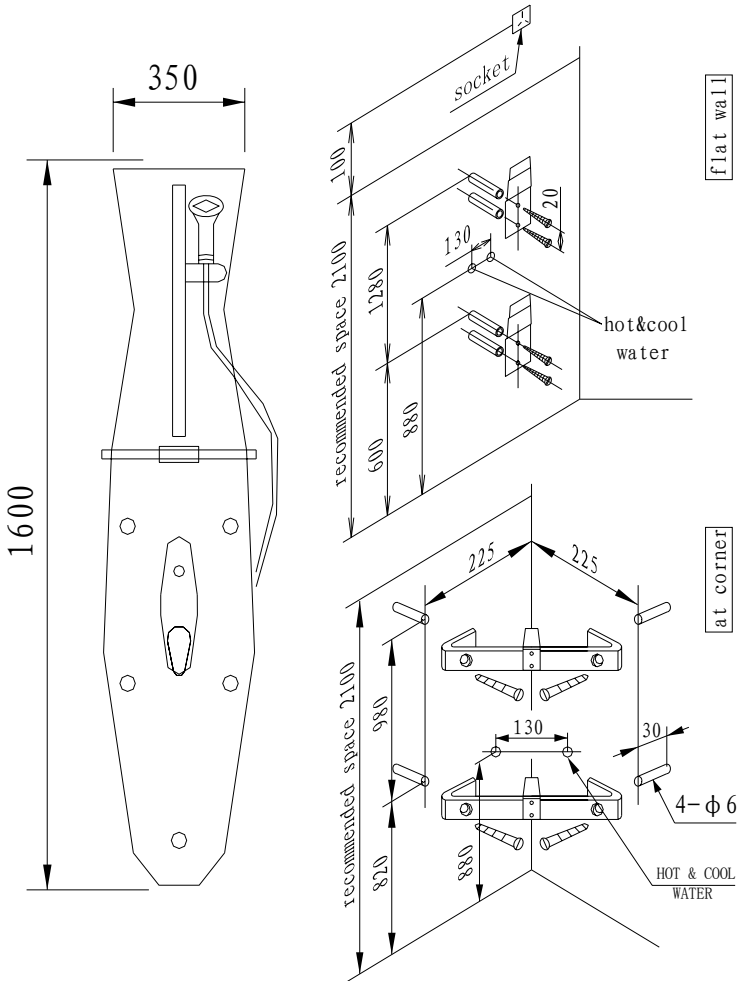
PROBLEM	REASON	SOLUTION
No power supply	1.Power plug is not well connected 2. Breaker is shut off.	1. Connect the power plug well. 2.Electricity leaking
Air switch is not responding	1.Air pipe is not well connected 2. Air swi56tch not working.	1.Connect the air pipe well 2.Change the air switch
No water from nozzle	Blocked	Remove the duty.
Leakage from the water pipe	1. Joint broken. 2. Not screwed enough. 3. Pipe broken.	1. Change the joint. 2. Screw more 3. Change the broken pipe.
No light	1. Power plug is not well connected. 2. Breaker is shut off. 3. Air switch problem. 4. Bulb burnt. 5. Wire broken.	1. Connect the joint. 2. Turn the broker on. 3. Check or change the air switch. 4. Change the bulb. 5. Change the broken wire.

6. INSTALLATION ILLUSTRATION

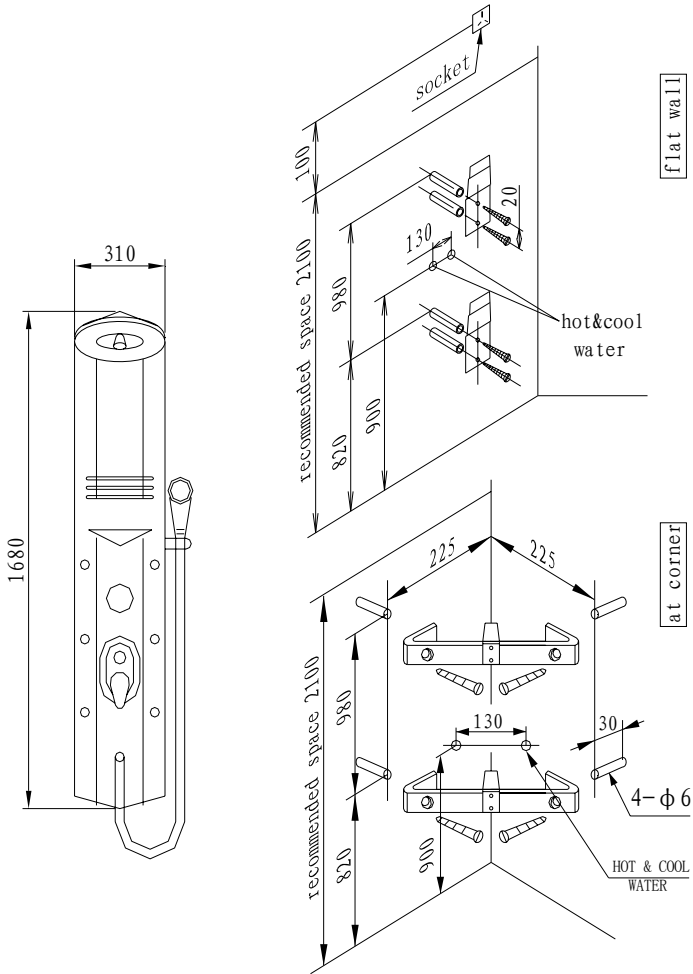
● G550 INSTALLATION DIAGRAM



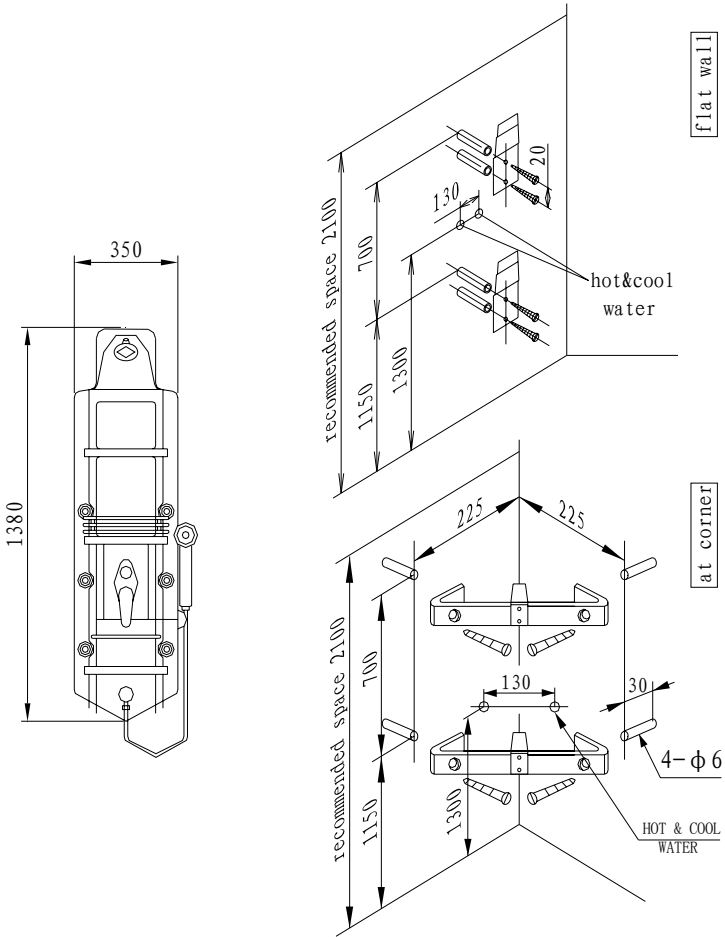
● G551 INSTALLATION DIAGRAM



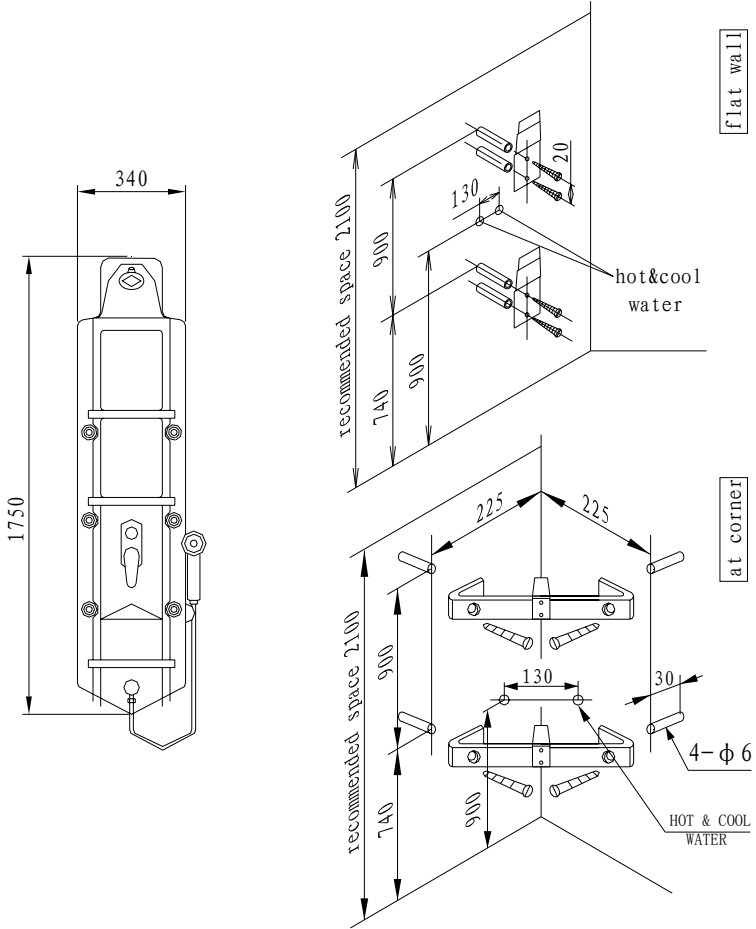
● G552 INSTALLATION DIAGRAM



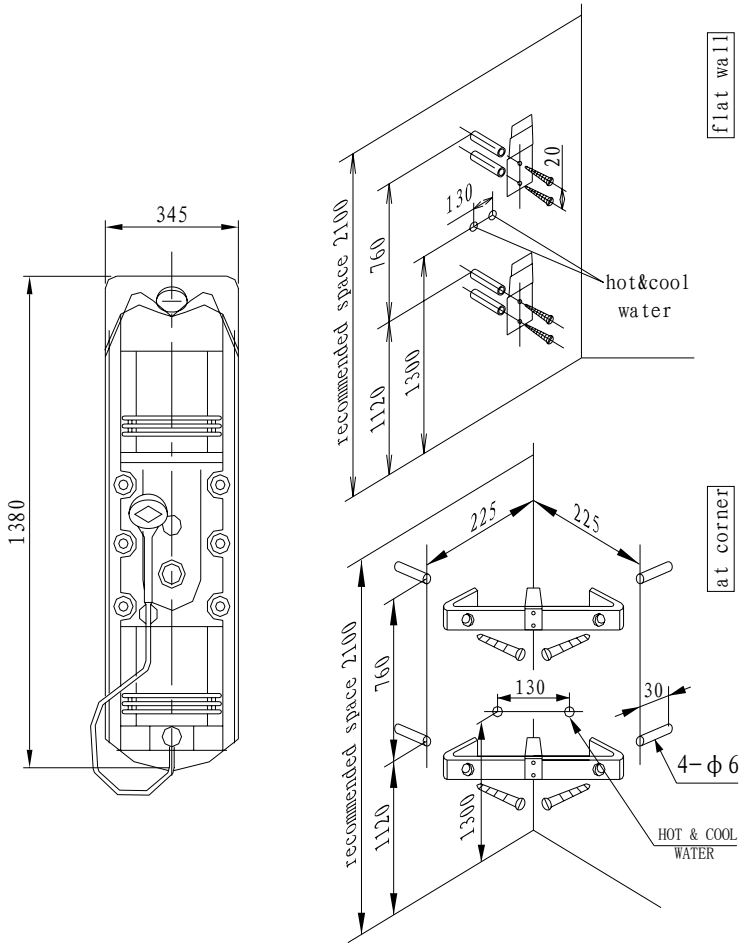
● G553 INSTALLATION DIAGRAM



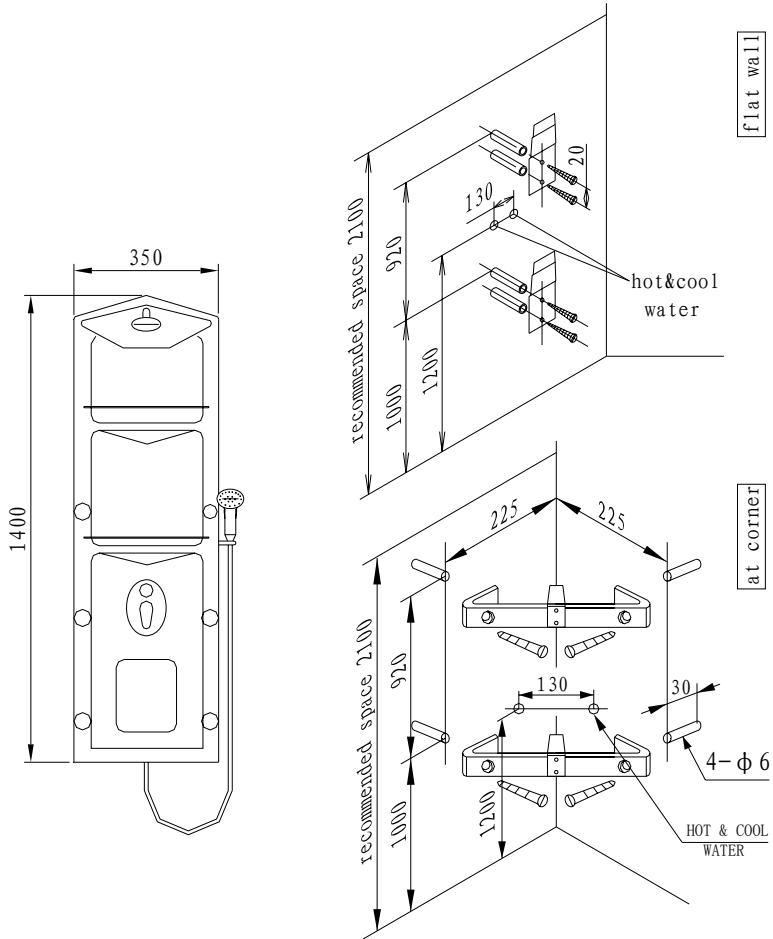
● G553A INSTALLATION DIAGRAM



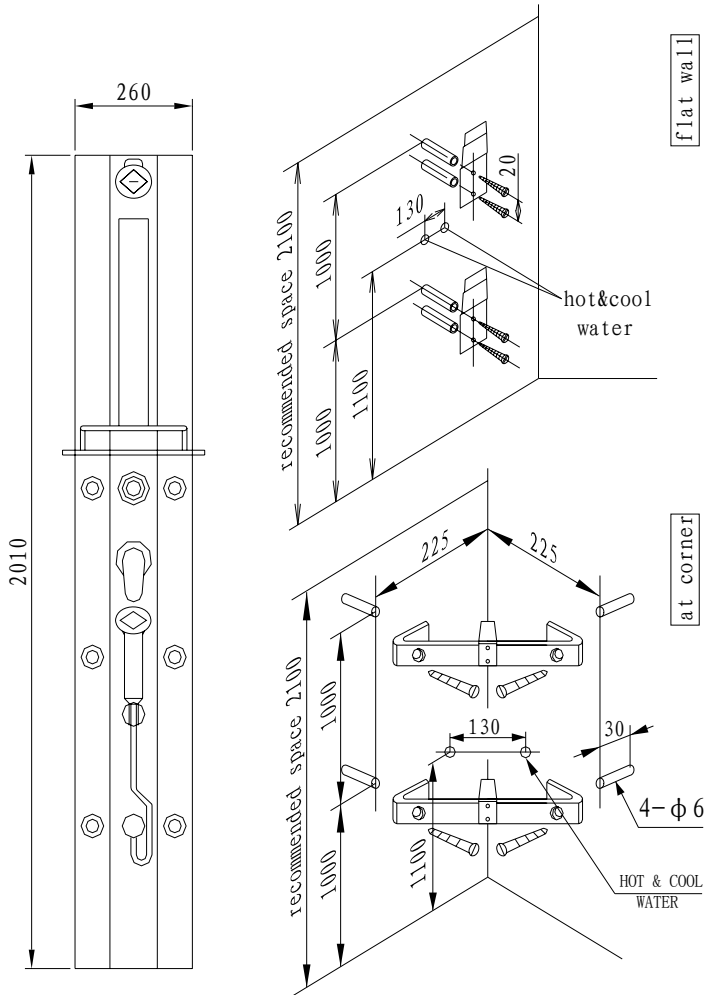
● G554 INSTALLATION DIAGRAM



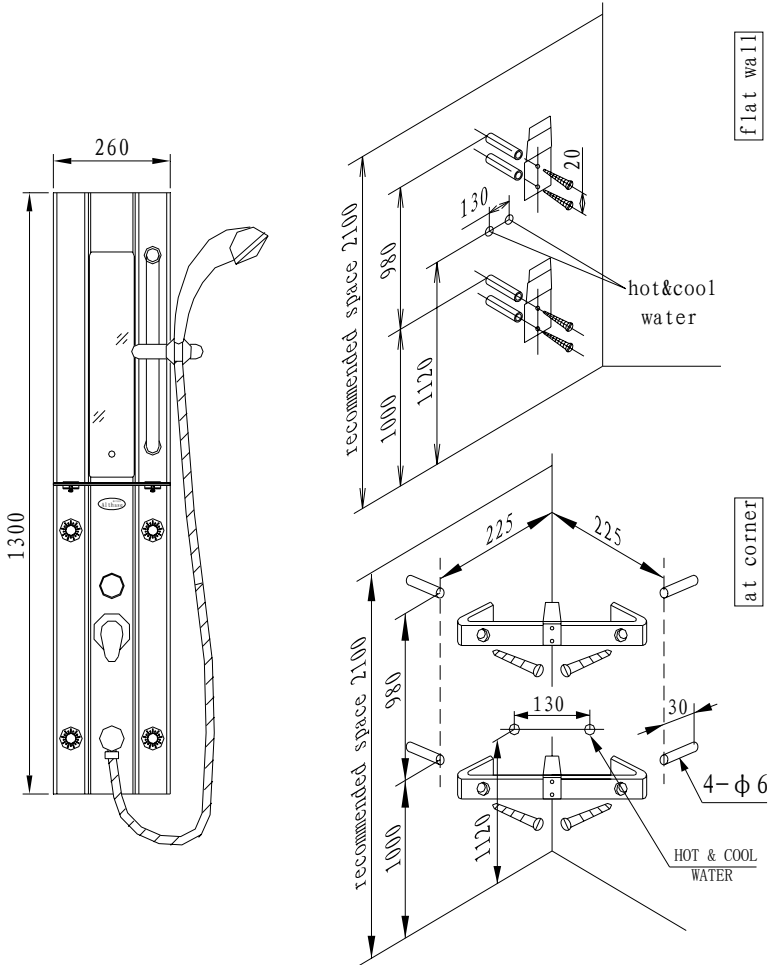
● G555 INSTALLATION DIAGRAM



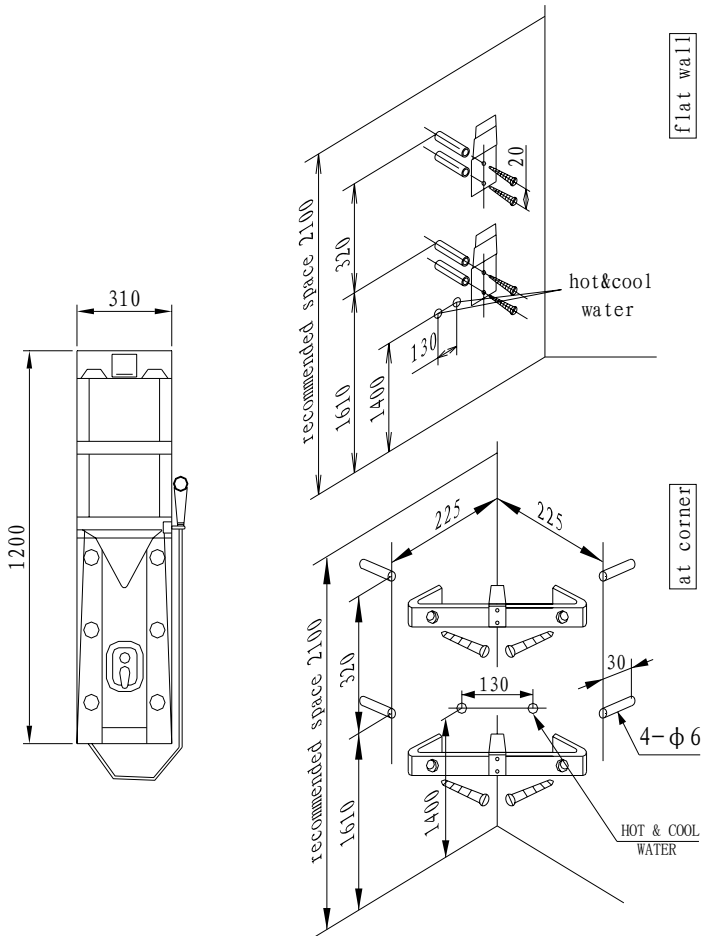
● G556A (B) INSTALLATION DIAGRAM



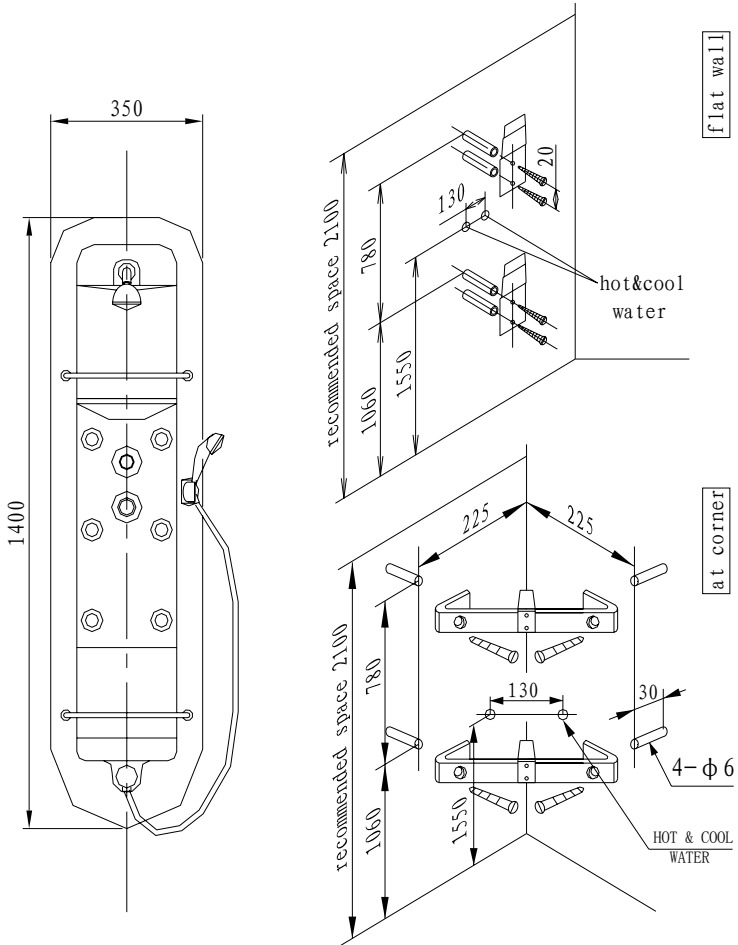
● G557B (A) INSTALLATION DIAGRAM



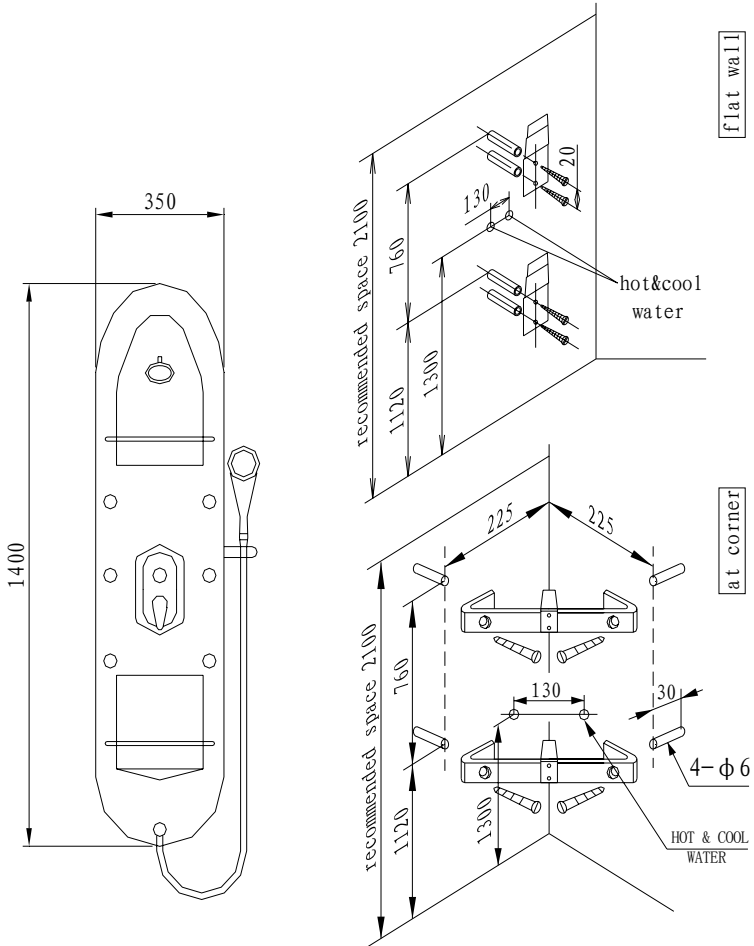
● G558 INSTALLATION DIAGRAM



● G559 INSTALLATION DIAGRAM



● G560 INSTALLATION DIAGRAM



● G561 INSTALLATION DIAGRAM

